

132:190

ST. JOHN RIVER

NOTE

1. ONE LINE TO CONSIST OF 6" SCH 40 API 5L SH-60S AND 2" SEAMLESS OR API 5L X-60, API 5L X-70 WITH 50 VOLT ELECTRIC TRACER AND 2" OF THERMOGRAPHS INSULATION WITH 1/2" WITHIN AND 3/4" AROUNDS FELT
2. ALL FIELD WELDED PIPE JOINTS SHALL HAVE FULL PENETRATION QUALIFIED WELDERS WELDING TO THE SPECIFICATION WITH SECTION II OF ASME WHICH INCLUDES WELDING VESSEL CODE
3. ONE SHORE END HYDRAUTICALLY TESTED TO 1.25 TIMES MAINTENANCE WORK PRESSURE
4. PROVISION SHALL BE MADE ON THE LINE FOR INSTRUMENTS AND DRAWINGS TO FACILITATE MAINTENANCE RELYING ON COMPLETION OF TEST ACCEPTANCE. WORKING DRAWINGS SHALL BE AS SHOWN SUBJECT TO ANY CHANGES TO THE DESIGN AND ASKED WELDED.

REFER TO SECTION "C" DWG. NO. 18-250-015-0
FOR DETAILS & ELEVATION OF PIPE SUPPORTS. 08-250-014

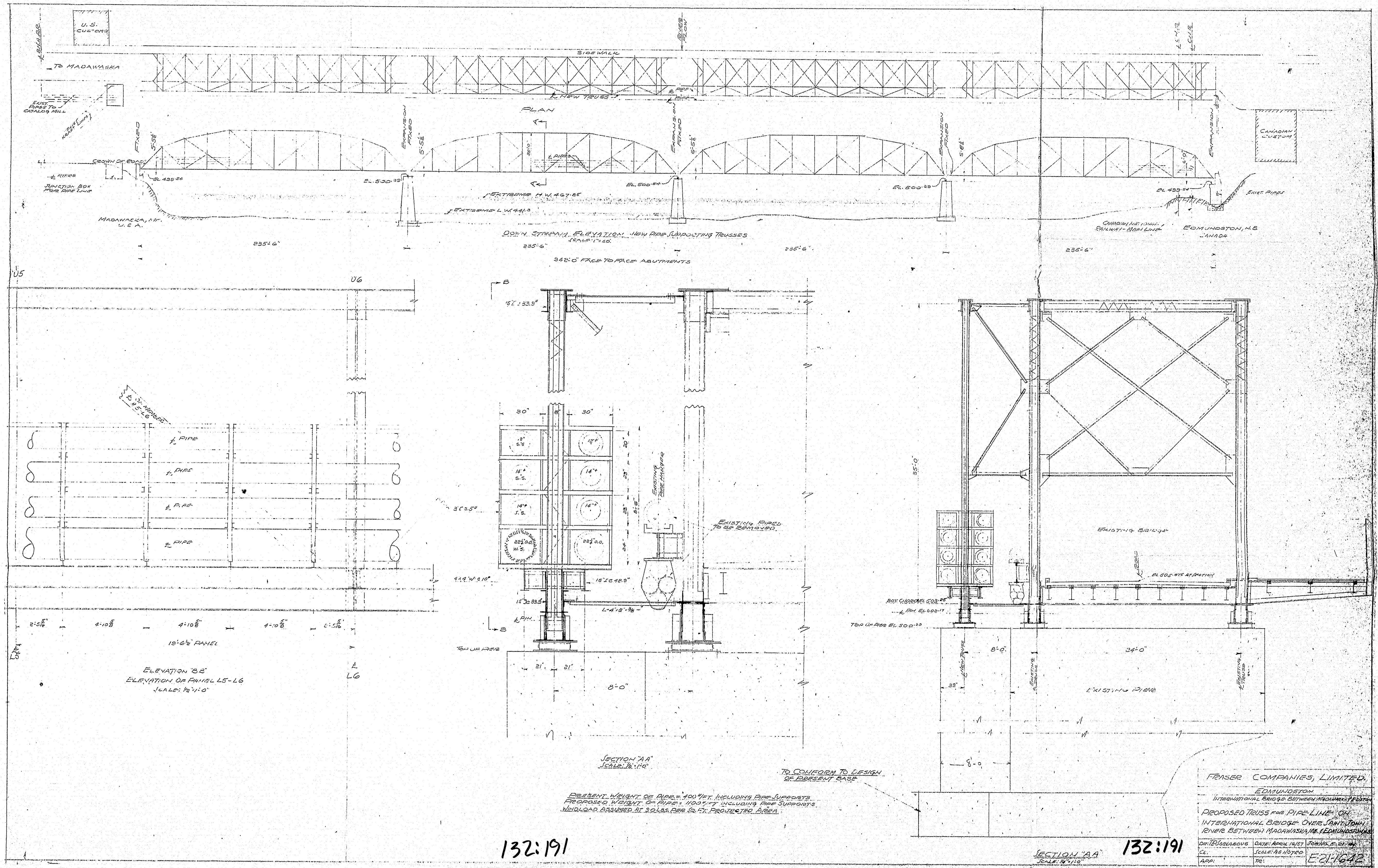
SCALE OF FEET

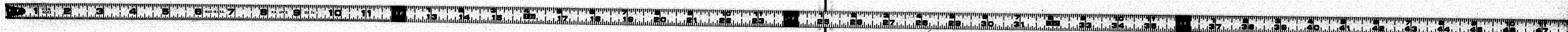
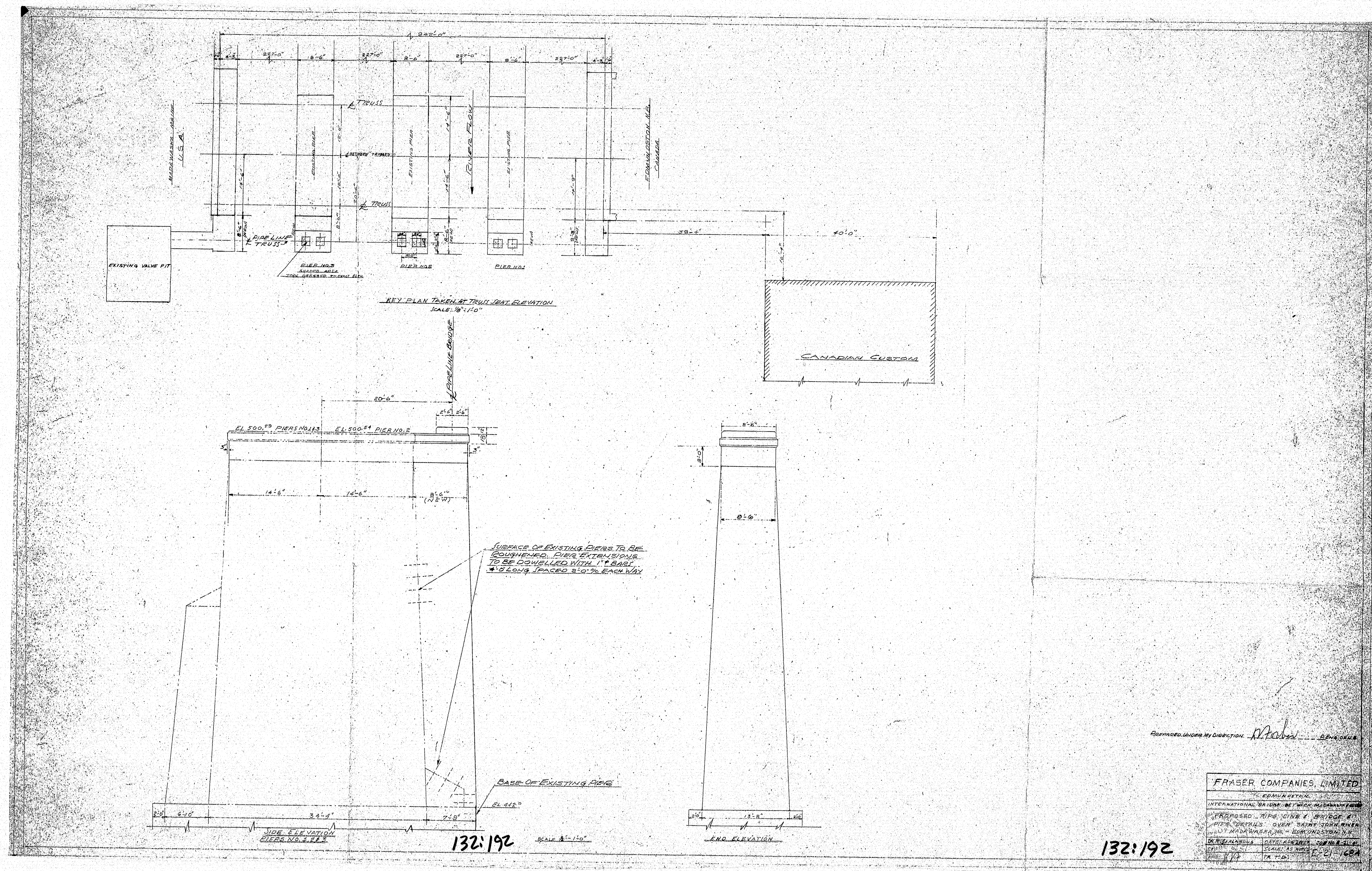
IRVING REFINING LIMITED
SAINT JOHN NEW BRUNSWICK

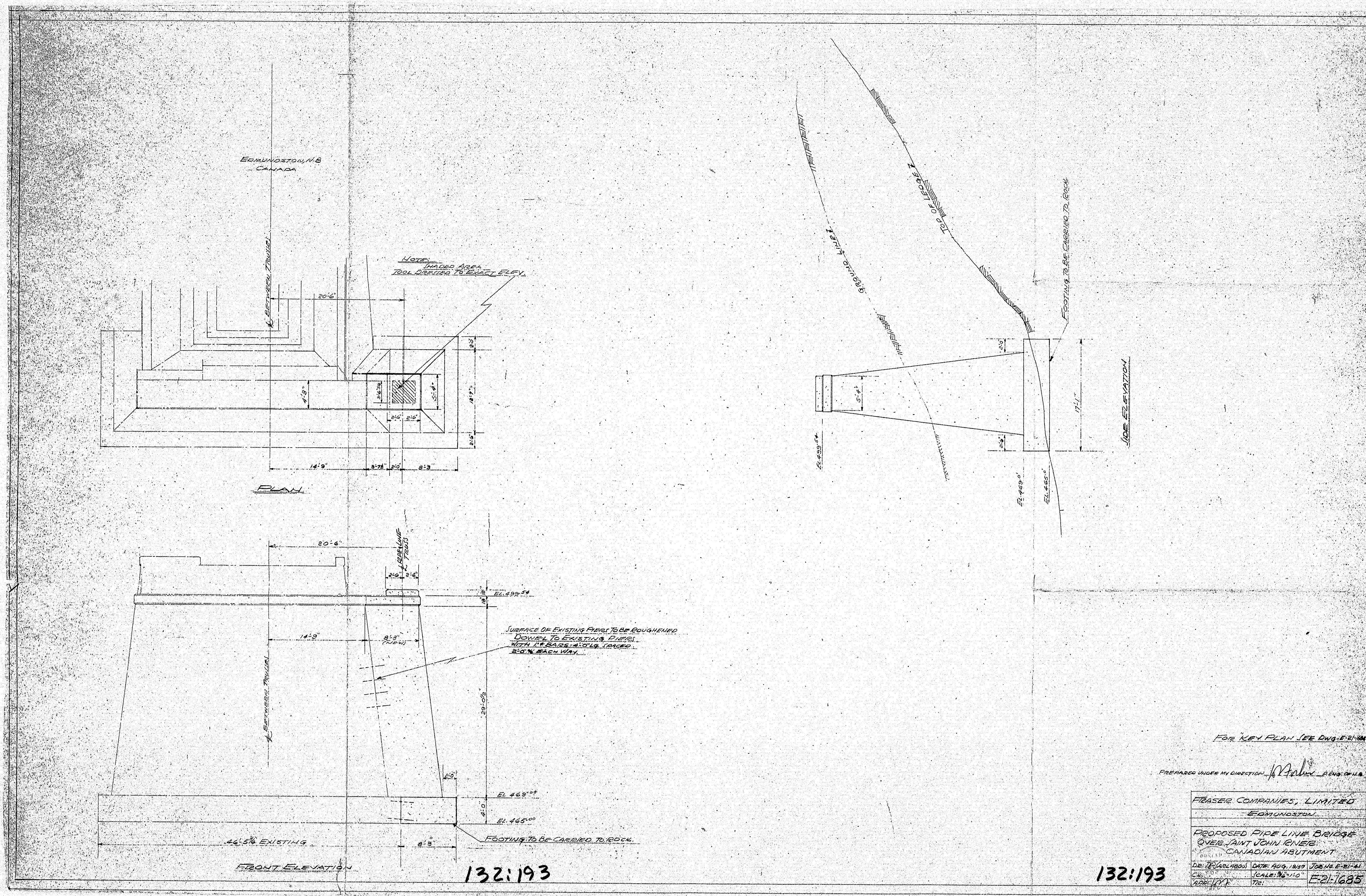
POSITIONING OF DAY TANK & G# LINE
LAYOUT FROM BRIDGE

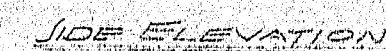
LA-250-027

132:190

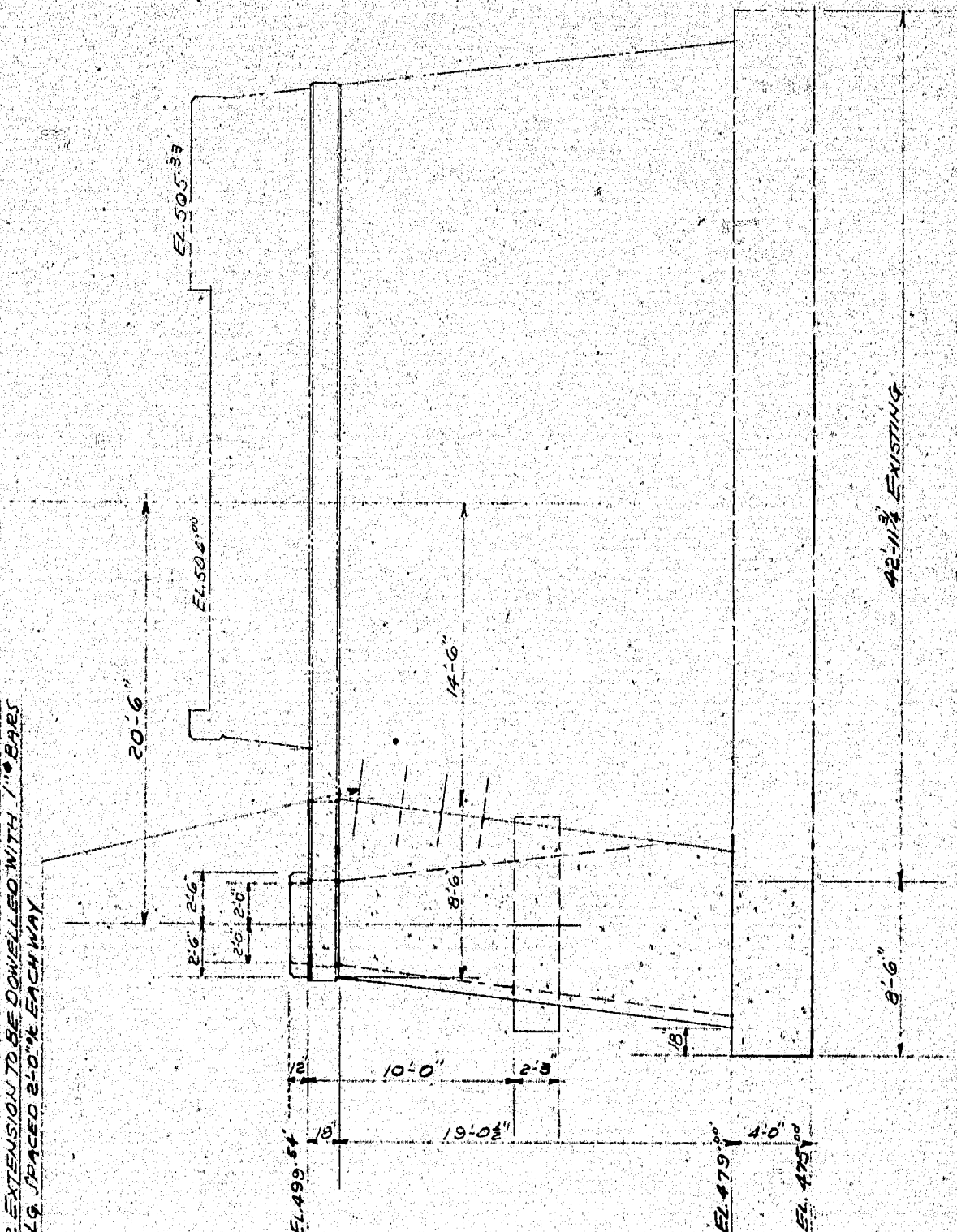








SURFACE OF EXISTING PIERS TO BE ROUGHENED
PIER EXTENSION TO BE DOWNLIFTED WITH 1" BARS



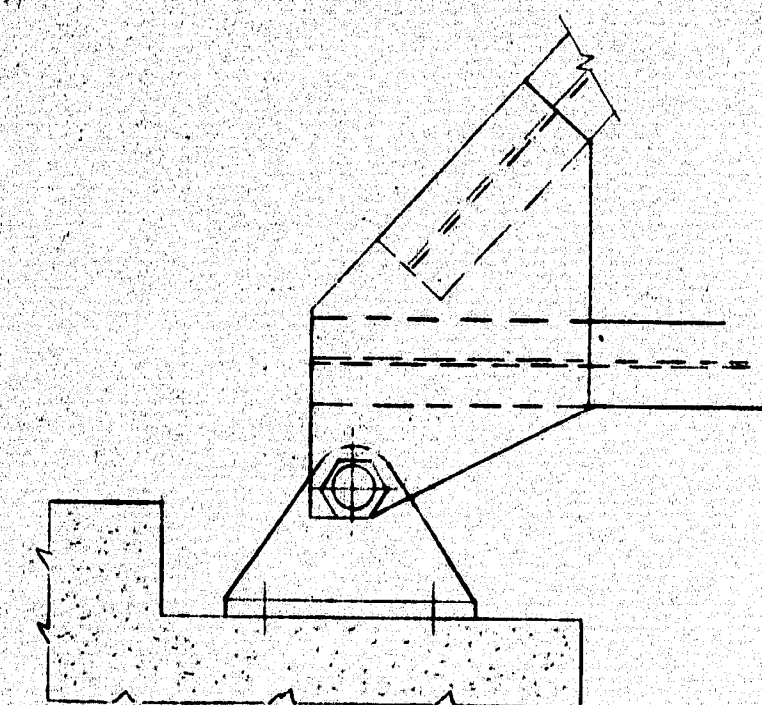
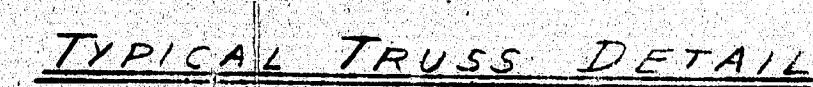
CRONT ELEVATION

FOR KEY PLAN" SEE DWG. E-21-1684
PREPARED UNDER MY DIRECTION *Walter B. ENGEL*

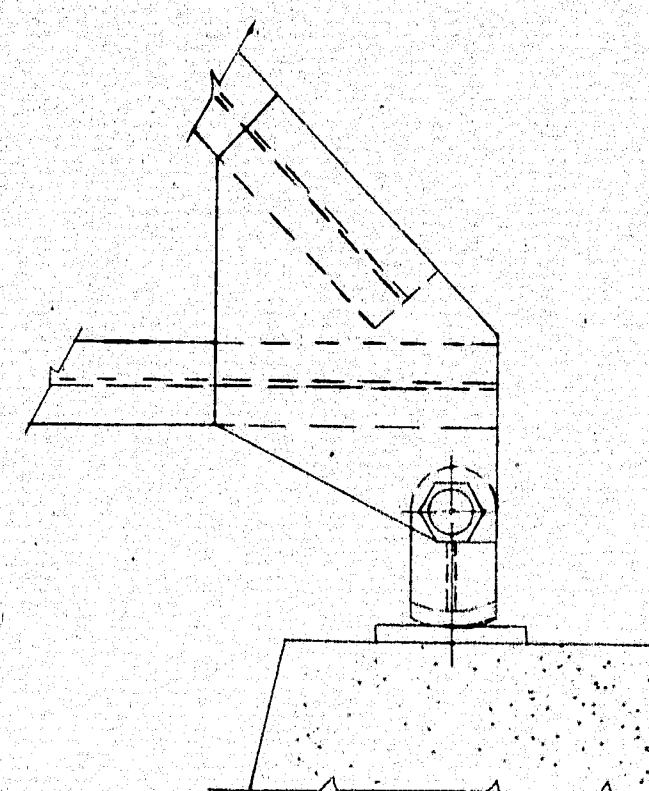
FRASER COMPANIES, LIMITED,
EDMUNDSTON
INTERNATIONAL BRIDGE BETWEEN MACLEODSON
PROPOSED PIPE LINE BRIDGE
OVER SAINT JOHN RIVER
AMERICAN ABUTMENT

DR. PLARABOW	DATE: AUG. 1957	JOB NO. E-21-41
CN. 10	SCALE: 3/16" = 1' 0"	F 21-1686

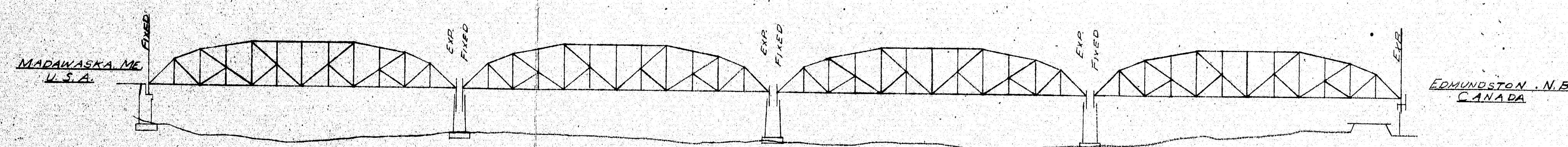
132:194



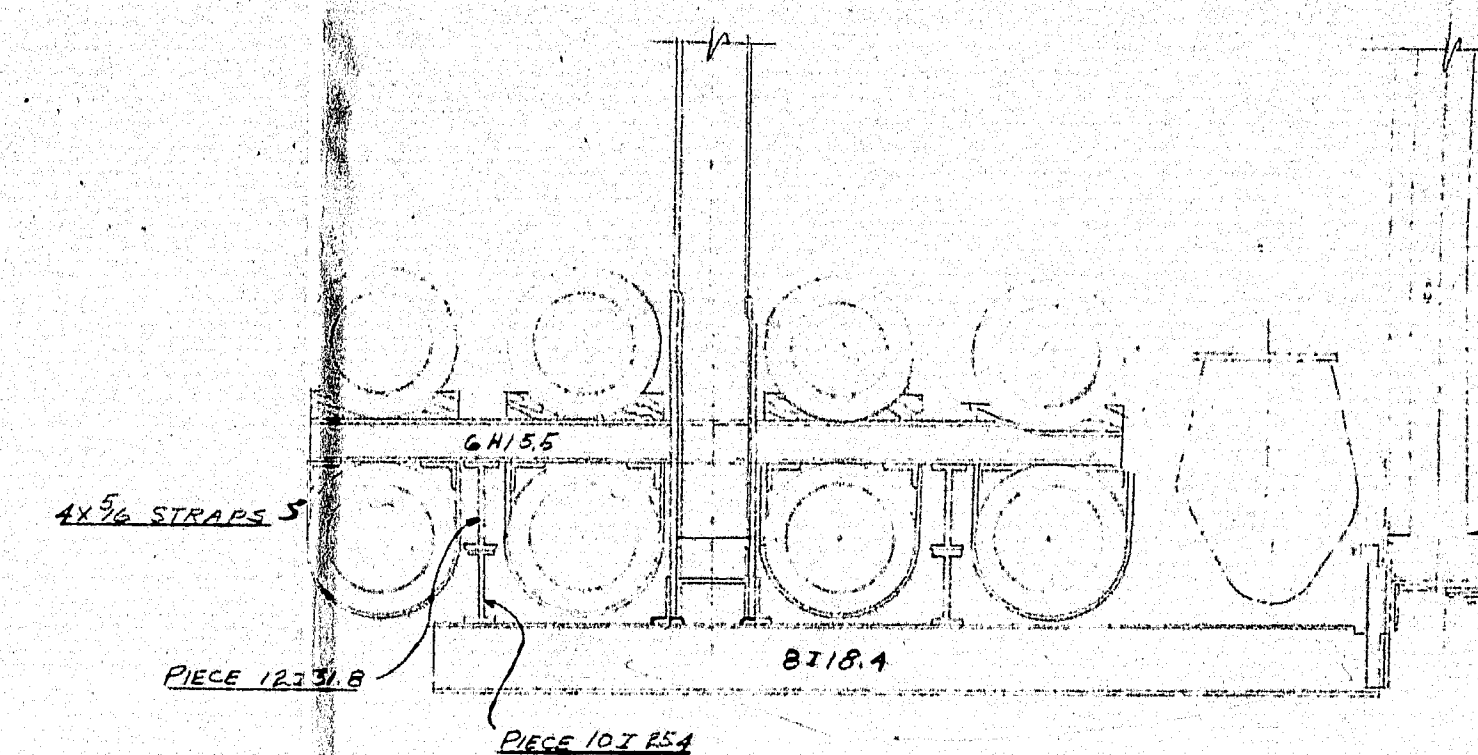
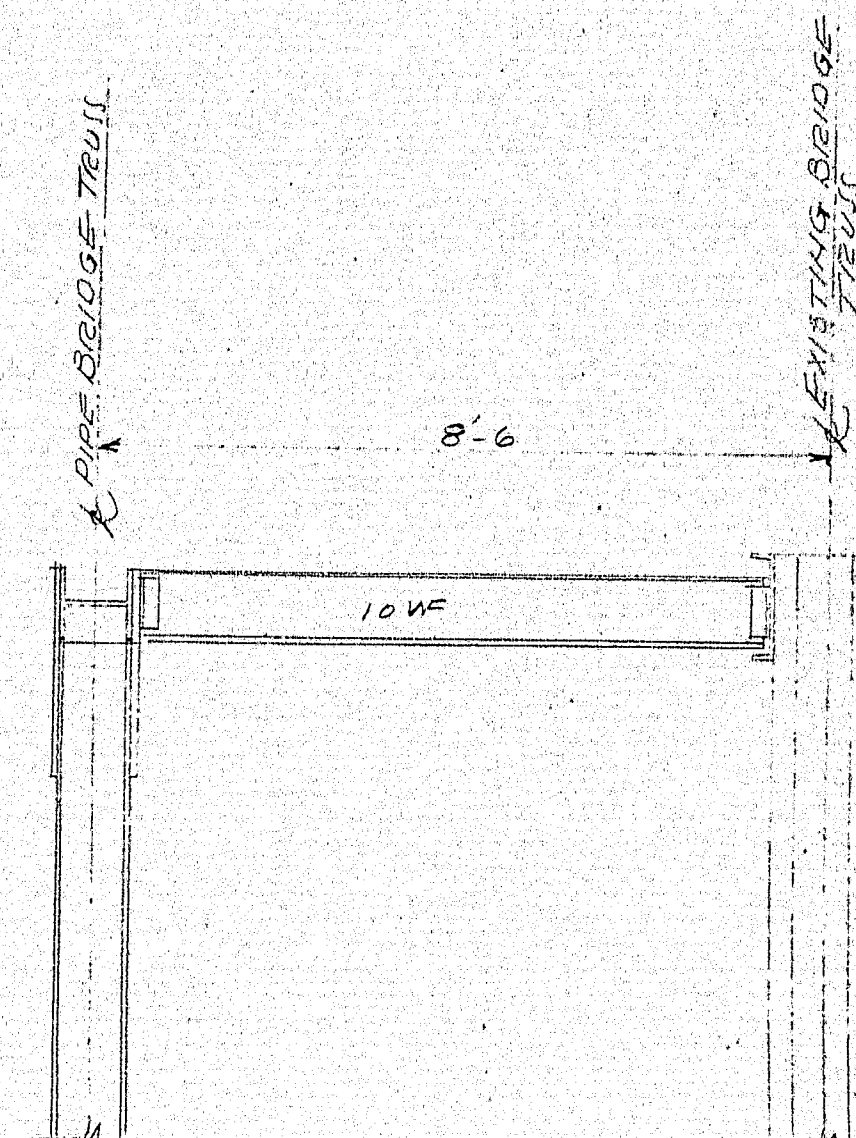
FIXED PIER MEMBER



EXPANSION PIER MEMBER



KEY PLAN



PIPE SUPPORTS AT PANEL POINTS

GENERAL NOTES

1. SHOP CONNECTIONS 8 ϕ RIVETS
2. FIELD " 3 ϕ HI-TENS BOLTS
3. SHOP PAINT 1-COAT RED LEAD
4. FIELD " BY OTHERS
5. ERECTION BY

DESIGN DATA

1. STEEL DESIGN IN ACCORDANCE WITH
C.S.A SPEC 36-1952 "STEEL HIGHWAY BRIDGES"
2. NEW TRUSSES DESIGNED TO CARRY TOTAL
LOAD OF 1500 KIP APPLIED AT PANEL POINTS

FRASER COMPANIES, LIMITED

EDMUNDSTON

INTERNATIONAL BRIDGE BETWEEN MADRID TO

PIPELINE BRIDGE OVER

SAINT JOHN RIVER

MADAWASKA, ME. - EDMUNDSTON, N.B.

DATE	AUG 21/57	JOB E-21-41
------	-----------	-------------

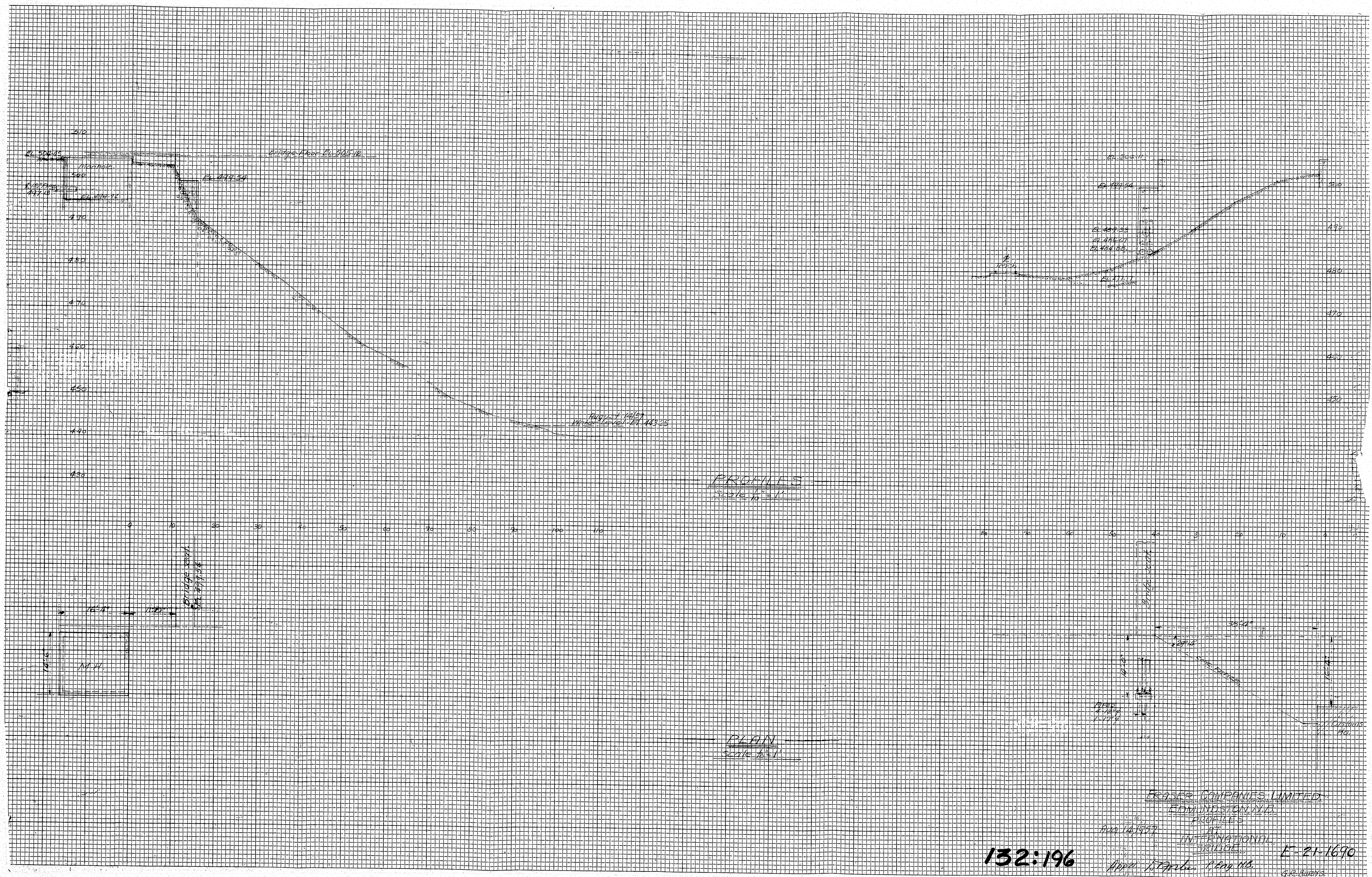
DATE	SCALE	E-21-1687
APP.	FR. TD.	

DATE	15.11.2015
------	------------

NOTE

TRACED FROM ROSS ENGINEERING
DRAWING NO. E2 FILE # B457

132:195



132:196

E-21-1690

